



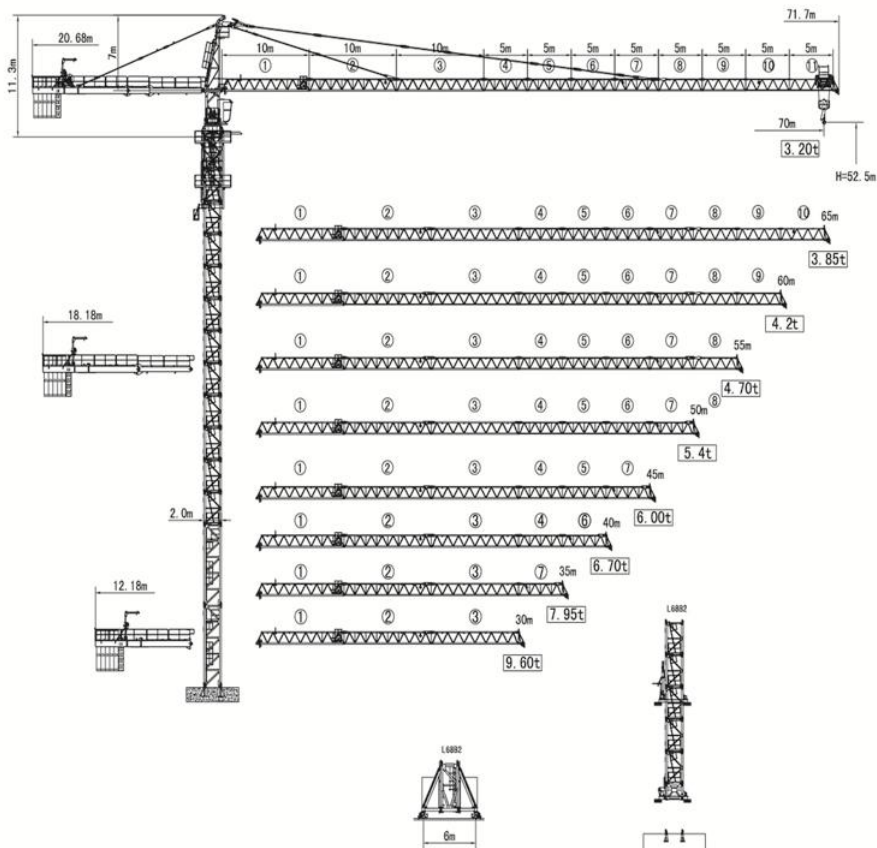
塔帽式塔式起重机 设备配置与技术参数

QTZ250(DH7032)

本数据仅供参考，如有更改，恕不另行通知

This data is for informational purposes only, and is subject to change without prior notice

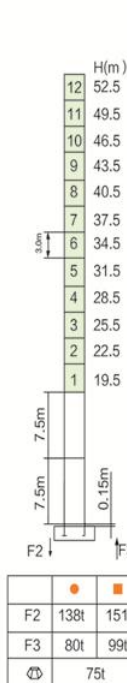
外形尺寸 Outline Dimensions



载荷特性表 Load Diagrams 12t

R ₀₁	Fall	R _{Cmax(%)}	C _{max(%)}	20	25	30	35	40	45	50	55	60	65	70
70m		21.4	12.0	12.0	10.0	8.0	6.5	5.5	4.75	4.15	3.55	3.15	2.75	2.45
		41.9	6.0	6.0	6.0	6.0	6.0	6.0	5.5	4.9	4.3	3.9	3.5	3.2
65m		22.8	12.0	12.0	10.8	8.7	7.2	6.2	5.15	4.55	3.95	3.45	3.1	
		44.7	6.0	6.0	6.0	6.0	6.0	6.0	5.9	5.3	4.7	4.2	3.85	
60m		22.8	12.0	12.0	10.8	8.7	7.2	6.2	5.15	4.55	3.95	3.45		
		44.7	6.0	6.0	6.0	6.0	6.0	6.0	5.9	5.3	4.7	4.2		
55m		22.8	12.0	12.0	10.8	8.7	7.2	6.2	5.15	4.55	3.95			
		44.7	6.0	6.0	6.0	6.0	6.0	6.0	5.9	5.3	4.7			
50m		23.3	12.0	12.0	11.1	8.9	7.4	6.2	5.35	4.65				
		45.7	6.0	6.0	6.0	6.0	6.0	6.0	6.0	5.4				
45m		23.8	12.0	12.0	11.3	8.9	7.4	6.2	5.35					
		24.7	12.0	12.0	11.8	9.5	7.9	6.7						
35m		24.8	12.0	12.0	11.9	9.6	7.95							
		24.9	12.0	12.0	11.9	9.6								

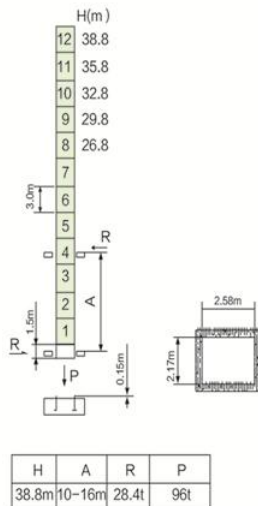
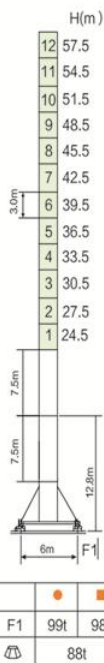
塔身截面 Masts



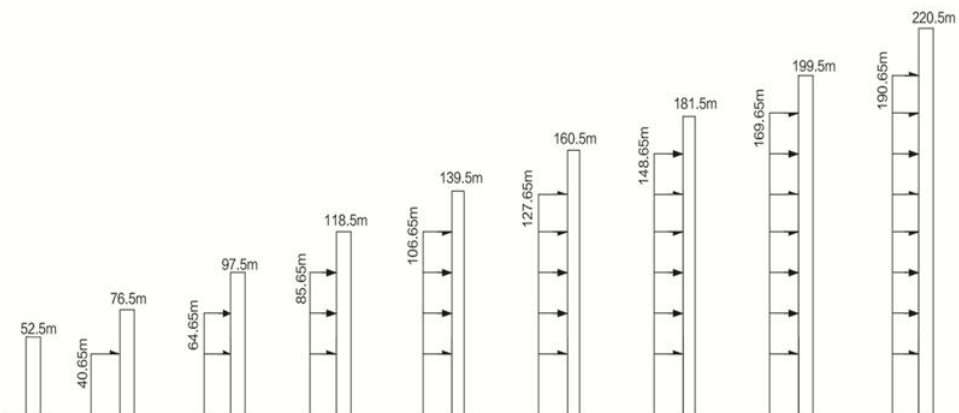
● 工作状态支反力 Reactions in service

■ 非工作状态支反力 Reactions out of service

⊕ 不含平衡重及压重塔机重量 Total weight of free standing crane (exclude Counter weight & ballast)



附着位置及塔机高度 Anchorage



机构 Mechanisms 12t

名称	机构代号	工作速度 (m/min)	起重量(t)	容绳量(m)	电机功率	
起升 Hoisting	55LVF30☆	双绳 2 fall	0-45	6.0	500(5层) 630(6层)	55
			0-90	3.0		
		四绳 4 fall	0-22.5	12		
			0-45	6.0		
	70RCS30	双绳 2 fall	0-40	6.0	525	51.5
			0-80	3.0		
		四绳 4 fall	0-20	12	>525*	
			0-40	6.0		
变幅机构 Trolleying	6JXF5	0-63			5.5	
回转机构 Slewing	JH13C☆	0-0.7			7.5×2	
电源 Power	380V (± 10%) /50Hz 75.5(72)kW					

*请与制造商联系 contact us please

☆标准配置 standamrd configuration

平衡重 Counter weight

					
70m	20.68m	5CA+P+5CB=24862kg	45m	18.18m	5CA+P+3CB=19262kg
65m	20.68m	5CA+P+4CB=24162kg	40m	18.18m	4CA+P+0CB=17162kg
60m	20.68m	5CA+P+1CB=22062kg	35m	18.18m	3CA+P+2CB=14362kg
55m	18.18m	5CA+P+5CB=24862kg	30m	12.18m	4CA+P+5CB=20662kg
50m	18.18m	5CA+P+2CB=22762kg	● P=362kg CA=4200kg CB=700kg		



山东大汉建设机械股份有限公司

地址：山东省济南市章丘区明水经济开发区赭山工业园

电话：+86 (531) 83260789

网址：www.dhtj.com

邮编：250200

Shandong Dahan Construction Machinery Co.,Ltd.

Add : Zheshan Industrial Part,Mingshui Development
Zone,Zhangqiu,Jinan City,Shandong Province,China

TEL : +86 (531) 83260789

Web : [http:// www.dhtj.com](http://www.dhtj.com)

ZIP CODE : 250200